

## REPRESENTATIVE LIST OF SCHOOL PROJECTS

### Chief Joseph Middle School, Bozeman, MT

~Completion in 2008~

**Architect:** Prugh & Lenon Architects, Bozeman, MT

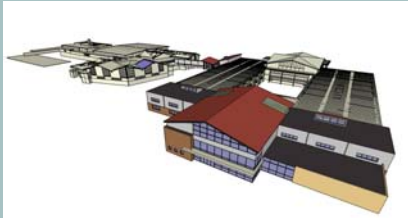


**Project Scope:** A new 130,000 sq.ft. middle school includes: two gymnasiums and multi-purpose assembly area, with second story classroom wings .

**Special Design Requirements:** The exterior walls of the school are constructed of light gage metal stud framing, while the interior demising walls are constructed of CMU. A composite floor for the upper level, and bar joists will be utilized for the roof framing

### Bozeman High School Remodel, Bozeman, MT

**Architect:** Comma-Q Architecture, Inc, Bozeman, MT



**Project Scope:** project consists of a mixture of newly constructed additions and newly retrofitted/renovated buildings of Bozeman's existing High School.

50,000 sq. ft. new construction, 125,000 sq ft existing buildings to be seismically upgraded.

### Hyalite Elementary School, Bozeman, MT

**Architect:** Prugh & Lenon Architects, Bozeman, MT



**Project Scope:** project is a 63,000 sq. ft. single story school. Constructed with load bearing hollow clay masonry walls and steel bar joist roof.

Project to be completed in 2009 with a total project cost of \$20,000,000.

## REPRESENTATIVE LIST OF SCHOOL PROJECTS

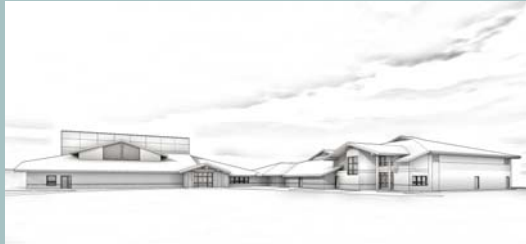


### Brandeis Hillel Day School, San Francisco, CA

**Architect:** BCV Architects, CA

**Project Scope:** Two-story library wing consisting of 24,000 square feet.

**Special Design Requirements:** Two-story glass entrance way; butterfly roof skylight.



### Ophir School Remodel & Addition, Big Sky, MT

**Architect:** Prugh & Lenon Architects, Bozeman, MT

**Project Scope:** consists of an addition of 28,000 sq. ft. to the existing school complex including: an extension to the existing library, a new kitchen area, additional classrooms and a new gymnasium. Gymnasium walls will be constructed of CMU, and other parts of expansion are to be constructed of light gage metal framing.

**Image  
Coming  
Soon**

### Clear Creek Middle School, Buffalo, WY

**Architect:** Plan One Architects, Jackson, WY

**Project Scope:** New 68,000 sq. ft. middle school, partial 2nd floor with two story commons, media center, and gymnasium structure. Consists of combination of masonry shear and bearing walls and structural steel framing with ordinary braced frames. Foundation composed of steel h-piles and gradebeams.