



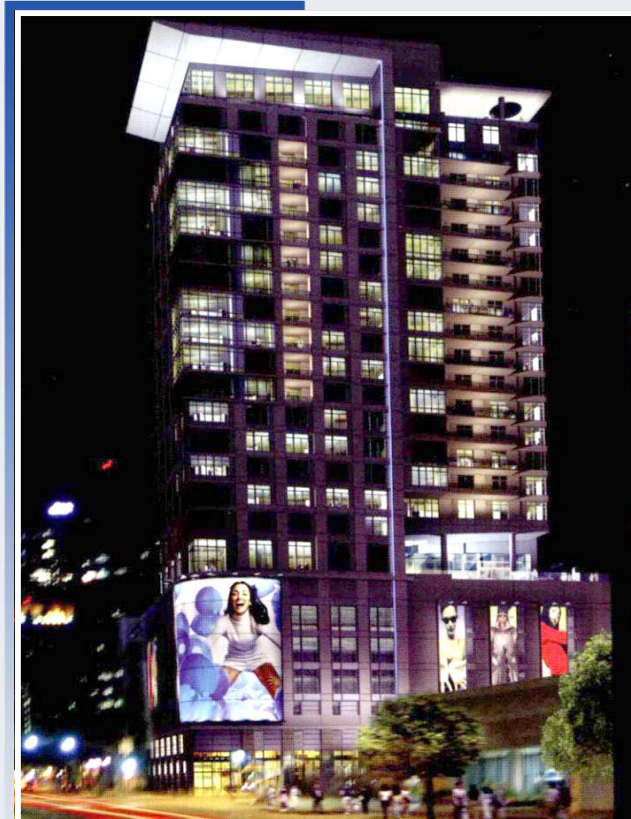
HOLLYWOOD & GOWER
Hollywood, CA

This structure is planned as a 20-story, mixed-use building to be located at the corner of Hollywood and Gower in Hollywood, CA. The ground floor space is made up of a combination of commercial/retail space with levels two through six consisting of a parking garage with approximately 250 spaces. The seventh floor is the first floor of residential units where also the clubhouse and outdoor pool area are to be located. At this level the plan area of the structure reduces to the residential tower which occurs from the 7th floor up to the 20th floor where the penthouse suites are located. A total of approximately 125 units are expected.

ARCHITECT
GMP ARCHITECTS-LA

CONTRACTOR
THE HANOVER COMPANY

SQUARE FOOTAGE
322,000



OLYMPIC & FIGUEROA
Los Angeles, CA

This building is located on the northeast corner of Figueroa Street and Olympic Boulevard in downtown Los Angeles, adjacent to the Staples Center. This luxury mixed-use complex features about 151 apartments, 6,841 square feet of retail space, and a 694 square-foot street-level outdoor patio. This luxury complex also features various restaurants, a clubhouse, fitness center, and swimming pools. Parking is one level below grade and four levels above grade for a total of 152 cars. This high-rise is 26 stories and is the newest addition to the downtown skyline.

ARCHITECT
RTKL Architects

CONTRACTOR
THE HANOVER COMPANY

SQUARE FOOTAGE
333,000



ARCHITECT
GMP ARCHITECTS-LA

CONTRACTOR
THE HANOVER
COMPANY

ASHTON WESTWOOD - Los Angeles, CA

This residential structure contains 64 apartment units and parking for about 159 cars. The structure is 7 stories high and the parking is two levels below grade. This building consists of approximately 125,000 square feet of housing and 61,000 square feet of parking. Total square footage is 187,000.



ARCHITECT
Togawa & Smith
Architects

SQUARE FOOTAGE
255,887

PRADO ON LAKE AVENUE - Pasadena, CA

A residential housing complex containing six stories above grade for residential and two levels below grade for parking. Total square footage contained in this project is approximately 255,887.



PALM & POLI INFILL - Ventura, CA

This four-story residential structure over two levels of subterranean parking is tucked into the hillside near downtown Ventura, California. The parking garage consists of cast-in-place concrete slabs and shear walls while the residential structure above utilizes wood stud framing with wood shear walls. This building will consist of approximately 18,000 square feet of housing and 15,000 square feet of parking.

ARCHITECT

ROESLING NAKAMURA
TERADA ARCHITECTS

SQUARE FOOTAGE

33,000



SANTA CLARA COURTS – Ventura, CA

This project is a 3 level structure above grade with one basement level. It contains 21 apartment units and 33 parking spaces. The basement contains 14,650 square feet and the housing portion contains 27,425 square feet. Poured-in-place concrete construction is utilized for the garage and podium, and wood frame is utilized for the 3 levels above the podium. Total square footage is 42,075 square feet.

ARCHITECT

Mainstreet Architects

SQUARE FOOTAGE

42,075



ARCHITECT
WALLACE GARCIA
WILSON ASSOCIATES

SQUARE FOOTAGE
152,000

MIRACLE MILE - Los Angeles, CA

This four story building consists of a residential portion of approximately 63 units and a two level, below-grade parking structure for about 139 cars. This structure utilizes poured-in-place concrete construction for the first two levels and three levels of wood frame. There are approximately 89,000 square feet of building and 62,000 square feet of parking.



LITTLE ITALY TOWERS

San Diego, CA

ARCHITECT
Carrier Johnson

SQUARE FOOTAGE
304,000

This building contains 146 housing units and the parking garage contains 240 stalls. The parking is four levels below grade, with eleven residential levels above grade. The total square footage for this project is approximately 304,000 square feet of poured-in-place concrete.



ARCHITECT
HKS Hill Glazier Studio

CONTRACTOR
Turner Construction

SQUARE FOOTAGE
670,000

CONSTRUCTION TYPE
Poured-in-place concrete

TERRANEA RESORT - Rancho Palos Verdes, CA

Terranea Resort is a 102-acre, full-service, Mediterranean-style luxury hotel overlooking the Pacific Ocean. This structure stands sixty feet tall and consists of separate casitas, bungalows, a children's center, 3 swimming pools, a 25,000 square-foot spa and fitness center, 63,000 square feet of meeting and events space, a golf academy, scenic hiking trails, and parking.



ARCHITECT
SB Architects

CONTRACTOR
Ledcor
Reed Davis

SQUARE FOOTAGE
455,000

RITZ CARLTON - THE LODGE AT RANCHO MIRAGE - Rancho Mirage, CA

The current portions of the project currently going forward (and under construction) are renovation of the existing hotel and the spa and suites building. The guest wings have CMU bearing and shear walls and cast-in-place concrete floor and roof slabs. The public/common area has a 2 level CIP concrete basement and steel-framed roof. The new additions are structural steel with metal deck with concrete filled floor and bare metal deck. Total area is 409,746 sf. The spa / spa suites have concrete bearing and shear walls and post-tensioned concrete floor and roof slabs. Total area is 45,263 square feet.



SYMANTEC CORPORATE HEADQUARTERS - Culver City, CA

This project consists of two 250,000 square-foot four-story office buildings and a parking structure for about 900 Symantec employees. The parking structure is two levels above grade and three levels below grade constructed of poured-in-place concrete. The two office buildings feature a number of sustainable features including a raised floor HVAC system, horizontal design, solar-powered light fixtures, drought-resistant landscaping, and a white PVC roof. This complex is the largest project designed for LEED-certification in Southern California.

ARCHITECT
HOK Architects

CONTRACTOR
Webcor Builders

SQUARE FOOTAGE
1,210,000



EQUINOX FITNESS CLUB - Hawthorne, CA

This tenant improvement project occupies the south-west corner of the ground floor and all of the 2nd floor and roof levels of an existing two-story plus basement concrete office building. The ground floor improvement also consists of approximately 6,000 square feet of new raised exterior terrace space. The new terrace includes stairs and ramps flanking an existing ramp into the basement parking garage. The 2nd floor is 32,000 square feet and includes weight rooms, locker rooms, and spas. The roof top level has a new 75'-0" long lap swimming pool raised approximately 5'0" above the existing deck. A new basketball court is located on the other half of the roof deck.

ARCHITECT
Brand & Allen Architects

CONTRACTOR
EPI Contractors

SQUARE FOOTAGE
43,000